

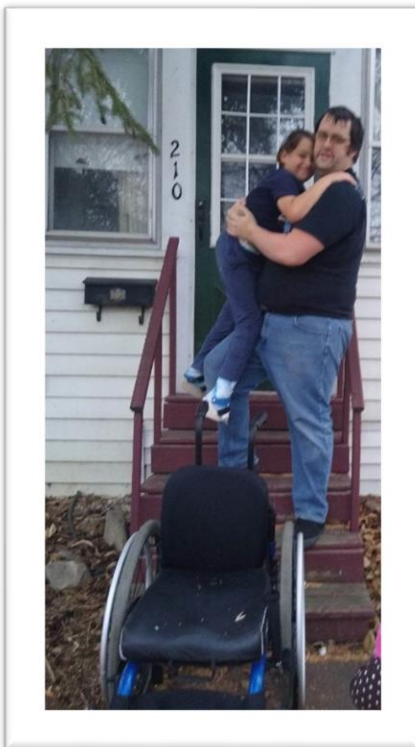


Marshfield Area

Habitat for Humanity[®]

2022 Fall Newsletter

PO Box 784 207 S Central Ave Suite D Marshfield, WI 54449
715-384-7533 marshfieldhabitat@gmail.com www.marshfieldhabitat.org



VINNY NEEDS A NEW HOUSE

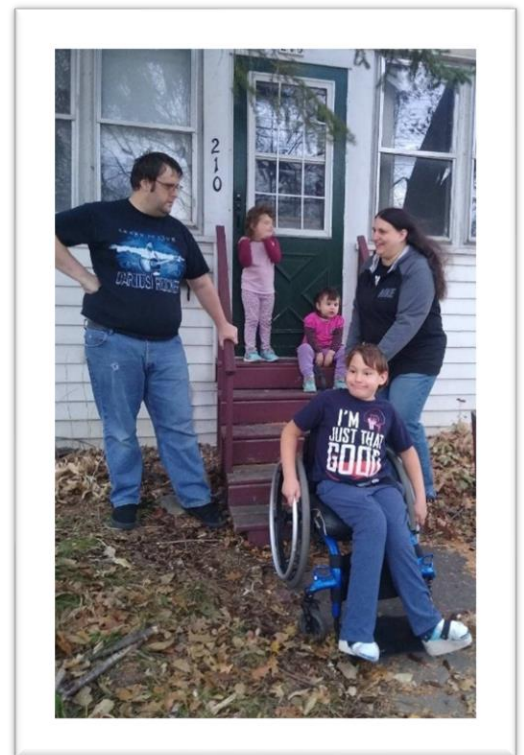
Vinny Patrie is 8 and he has Spina bifida. Spina bifida is a condition that affects the spine and is usually apparent at birth. It is a type of neural tube defect (NTD). Spina bifida can happen anywhere along the spine if the neural tube does not close all the way. When the neural tube doesn't close all the way, the backbone that protects the spinal cord doesn't form and close as it should. Because of this Vinny is in a wheelchair.

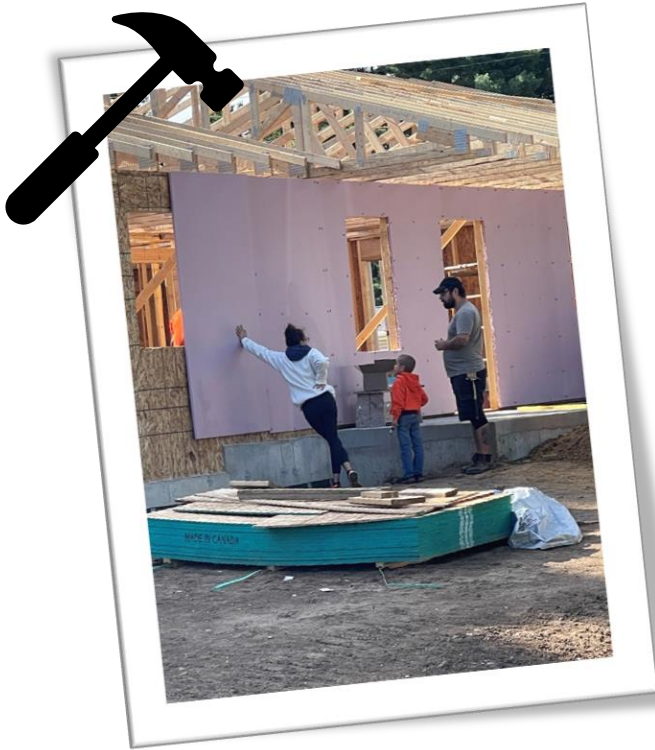
The problem is the house where Vinny currently lives is not handicap accessible, and cannot be easily modified for a person in a wheelchair. Thus, whenever Vinny needs to leave the house someone has to carry him down a short flight of stairs. This was not a huge

problem when Vinny was 4, but he is growing and getting a lot heavier to carry up and down the stairs every day.

He really needs an Americans with Disabilities house.

We are happy to announce that Vinny, his two sisters Maya (age 4) and Ava (age 3), along with James and Jacqueline have been selected as our Habitat 2023 Partner Family.





Work continues on the Kusay house



Ryan and Melissa Kusay's house is nearing completion. Construction began in late July with the basement. Framing was completed in August, with siding, roofing, electrical, doors and windows being installed in September and October.

We had hoped to complete the house by Thanksgiving, however some rainy Saturdays in August put us a bit behind schedule. We caught up a little in the fall and are hoping to have the Kusay's in their new house before Christmas.

We have been very blessed with the turnout of community volunteers to help with the construction: Don Zais, Ed Plotka, Ed Korlesky, Tim Penno, Dale Kramer, Donald Pikul, Brian Finnegan, Bruce Lautenschlager, Bob Davis, Randell Reigel, Norlyn Freese, Toney Bookhart, Kevin Brock, and Greg Reiersen. Our subcontractors: Jeff Ertl Trucking LLC, Weiler Concrete, Lang Lumber, S&S Electric, Stratford Plumbing and Heating, Reigel Plumbing, Over the Top Roofing, Stratford Building Supply, Wisconsin Homes, Freese Construction, Extreme Drywall, Prince Corporation, Sherwin Williams, Kohler, Whirlpool and Home Depot have been very generous and a pleasure to work with. **A HUGE thank you to all!!**

All are welcome to our Home Dedication being planned for January.

Emergency Home Repair Program provides critical work for area residents



Although the summer and fall have been busy with a new house construction, the Marshfield Habitat construction crew has still managed to find the time to build 6 access ramps in our area.

These ramps help elderly and disabled people remain in their homes. This program began with a generous grant from the DeVedder family which provided the startup funds for our **Emergency Home Repair Program.**

The ramps are built with volunteer labor and we only request that the participants help cover the cost of materials.

Meet our newest Board Member

Marshfield Area Habitat for Humanity recently welcomed its newest Board Member, **Ted Praxel**. Ted is a retired physician having practiced in Central Wisconsin for more than 35 years; first in Wisconsin Rapids and for almost 30 years in Marshfield. Originally from Milwaukee where he attended UW-Milwaukee and the Medical College of Wisconsin. Ted did his residency in internal medicine in Marshfield where he met his wife Kathy, a Marshfield native.



During his time in practice, Ted noticed that a number of issues during the day were not truly medical, but frequently had roots in societal challenges such as inadequate housing. After retiring in 2022 he learned about the need for Board Members at Habitat. He has served with other Board Members in other volunteer organizations and thought Habitat was another truly worthwhile cause to try to help benefit our community.

\$\$\$ Did you know....

Did you know that if you are 72 or older, you can donate to Marshfield Area Habitat for Humanity directly from an IRA? This enable you to donate and not pay taxes on that portion of the money deducted from your IRA. You do not need to itemize deductions to claim this tax break. Any donations made directly from an IRA also count toward your MDA (minimum distribution amount). Con tact your financial adviser for more details and to donate from pre-tax dollars.



Marshfield Area Habitat Needs YOU!!!

We need volunteers!

Whether to help build a house or join our Board of Directors, we need you!!! When approaching people about joining the Board, they often say: "I don't know anything about construction". Not a problem. Marshfield Habitat needs Board Members with a variety of skills, we need people in marketing and communications, we need people in accounting and banking, we need people that know about real estate, we need people for fundraising, and our family selection/support committee needs volunteers. And of course, we need people who can swing a hammer too.

So, if you believe in our philosophy that everyone deserves a safe, adequate and affordable place to live, come join us. If you have been blessed and want to give back to people in your community who have had some hardships or are just less fortunate, please consider volunteering. One or two hours a month. Join one of our committees, become a Board Member. There are numerous opportunities to help and everything we do stays in the community.

Contact the office for more information.



Thank You to our Generous Donors!



Gifts from January 1, 2022 to November 7, 2022

\$5000 and above

Home Depot
Margaret King
Habitat for Humanity Fund

\$1000-\$4999

Hawkins Ash CPAs
Lang Lumber
Mauston ReStore
Novy Habitat for Humanity Fund
Smith, Michael
Toyama, Gerri
Wal-Mart

\$500-\$999

Armstrong, Mary Rose
Haessly, Brad
Hayes, John & Stephanie
Meyer, Bonnie
Over the Top Roofing & Siding
Wood, Michael & Kathleen

\$100-\$499

Anonymous
Baker, Kurt
Billings, Ken & Joyce
Bitner, Tom & Radeztsky, Carole
Breu, Leah
Brubaker, Barry & Margaret
Burger, Joe & Terry
Carpenter, Joyce
Denny, Ed & Nelke, Laura
Espada, Carmen & Cancel, Efrain
Habitat for Humanity International
Hasenhorl, Donald & Kathleen
Hub City Storage
Kelman, Donald & Cynthia
Krake, Tom & Darlene
Lang, Aaron J.
Marshfield Lions Club
McGivern, Dave & Karen
Mueller, Diane
Neve, LaVerne
Norberg, Arlene
Nystrom, Don & Barb
Partners Bank - Marshfield
Swenson, Ken & Jean
Thrivent Financial for Lutherans
Twiggs, John & Susan
Weber, David
Zittleman, Ken & Norma
Zondlo, Jeff & Candice

\$1-\$99

AmazonSmile
Campbell, John & Kathy
Fern, James & Shirley
Hafermann, Brad
Moen, Noreen
Nikolai, Don & Penny
Schreiber, Chris
Vornholt, Karen
Writz, Paul & Nina

Give the Gift of Housing Any Time of the Year.

**Your Donation Builds
Strength,
Stability,
Self-Reliance,
and Shelter.**

Donate Online or By Mail Today.

In Recognition of: **Don Zais**
whose continued support and
dedication to Marshfield Habitat
is greatly appreciated.
Thank you for all you do Don!!